

Article

Imbalanced Loss-Integrated Deep-Learning-Based Ultrasound Image Analysis for Diagnosis of Rotator-Cuff Tear

Kyungsu Lee ^{1,†}, Jun Young Kim ^{2,†}, Moon Hwan Lee ¹, Chang-Hyuk Choi ^{2,*} and Jae Youn Hwang ^{2,*}

¹ Information and Communication Engineering, Daegu Gyeongbuk Institute of Science and Technology, Daegu 42988, Korea; ks_lee@dgist.ac.kr (K.L.); moon2019@dgist.ac.kr (M.H.L.)

² The Department of Orthopedic Surgery, School of Medicine, Catholic University, Daegu 42472, Korea; drjunyoung@cu.ac.kr

* Correspondence: chchoi@cu.ac.kr (C.-H.C.); jyhwan@dgist.ac.kr (J.Y.H.)

† These authors contributed equally to this work.

Abstract: A rotator cuff tear (RCT) is an injury in adults that causes difficulty in moving, weakness, and pain. Only limited diagnostic tools such as magnetic resonance imaging (MRI) and ultrasound Imaging (UI) systems can be utilized for an RCT diagnosis. Although UI offers comparable performance at a lower cost to other diagnostic instruments such as MRI, speckle noise can occur the degradation of the image resolution. Conventional vision-based algorithms exhibit inferior performance for the segmentation of diseased regions in UI. In order to achieve a better segmentation for diseased regions in UI, deep-learning-based diagnostic algorithms have been developed. However, it has not yet reached an acceptable level of performance for application in orthopedic surgeries. In this study, we developed a novel end-to-end fully convolutional neural network, denoted as Segmentation Model Adopting a pRe-trained Classification Architecture (SMART-CA), with a novel integrated on positive loss function (IPLF) to accurately diagnose the locations of RCT during an orthopedic examination using UI. Using the pre-trained network, SMART-CA can extract remarkably distinct features that cannot be extracted with a normal encoder. Therefore, it can improve the accuracy of segmentation. In addition, unlike other conventional loss functions, which are not suited for the optimization of deep learning models with an imbalanced dataset such as the RCT dataset, IPLF can efficiently optimize the SMART-CA. Experimental results have shown that SMART-CA offers an improved precision, recall, and dice coefficient of 0.604% (+38.4%), 0.942% (+14.0%) and 0.736% (+38.6%) respectively. The RCT segmentation from a normal ultrasound image offers the improved precision, recall, and dice coefficient of 0.337% (+22.5%), 0.860% (+15.8%) and 0.484% (+28.5%), respectively, in the RCT segmentation from an ultrasound image with severe speckle noise. The experimental results demonstrated the IPLF outperforms other conventional loss functions, and the proposed SMART-CA optimized with the IPLF showed better performance than other state-of-the-art networks for the RCT segmentation with high robustness to speckle noise.

Keywords: rotator-cuff tear; semantic segmentation; deep learning



Citation: Lee, K.; Kim, J.Y.; Lee, M.H.; Choi, C.-H.; Hwang, J.Y. Imbalanced Loss-Integrated Deep-Learning-Based Ultrasound Image Analysis for Diagnosis of Rotator-Cuff Tear. *Sensors* **2021**, *21*, 2214. <https://doi.org/10.3390/s21062214>

Academic Editor: Chulhong Kim

Received: 2 February 2021

Accepted: 11 March 2021

Published: 22 March 2021

Publisher's Note: MDPI stays neutral with regard to jurisdictional claims in published maps and institutional affiliations.



Copyright: © 2021 by the authors. Licensee MDPI, Basel, Switzerland. This article is an open access article distributed under the terms and conditions of the Creative Commons Attribution (CC BY) license (<https://creativecommons.org/licenses/by/4.0/>).

1. Introduction

A rotator cuff tear (RCT) is a common occurrence that can lead to pain, weakness, and limited range of motion in the shoulder joint [1–3]. In severe cases of RCT that can cause a functional disability, an accurate diagnosis and treatment are necessary. Symptomatic RCTs can be treated either nonsurgically or surgically. The precise diagnosis of RCT is essential before surgical treatment [4–6].

Among non-invasive imaging techniques, ultrasound imaging (UI) and magnetic resonance imaging (MRI) systems have been widely used for the diagnosing locations of RCT [3,6]. An MRI system has been a favorable imaging tool for localizing an RCT but it has a few limitations [7,8]; e.g., it is not easily accessible owing to its high cost, acoustic noise, and time consumption, and it cannot be applied to the diagnosis of locations of RCT

dynamically. However, USG also has several advantages compared to MRI, including, a real-time dynamic capture, wide availability, low-cost, and time efficiency. Therefore, UI can be an alternative to MRI for the diagnosis of locations of RCT [8–10].

Various image processing-based segmentation techniques for the diagnosis of locations of RCT have been developed with the advancement of computing power [11]. Conventional image processing algorithms based on morphological operations such as dilation and erosion have been applied to the diagnosis of locations of RCT, although their performance needs to be further improved [7,8,12]. Contour-based segmentation methodologies have recently been used as an alternative solution for the segmentation of regions of an RCT [3,13]. However, they have also shown a limited performance in the diagnosis of locations of RCT owing to the long processing time required to produce the results, thus hindering the rapid translation of the techniques in clinics for an RCT diagnosis.

More recently, several deep-learning algorithms for physical image analysis have been introduced. In particular, deep-learning-based segmentation algorithms have shown a superior performance in the segmentation of diseased regions compared to conventional image processing algorithms [14,15]. A deep-learning algorithm with a channel attention module with multi-scale average pooling has been developed for better segmentation of breast tumors [14]. Li et al. [15] applied a deep-learning-based image processing algorithm as a diagnostic tool for the heart. The deep-learning-based diagnostic analysis outperformed the conventional image processing techniques for the diagnosis of various diseases.

However, conventional deep-learning-based segmentation algorithms may not be suited for the segmentation of RCTs in ultrasound images because of the following reasons: (1) an ultrasound image typically has a low contrast and high speckle noise [16]; (2) RCT regions in an ultrasound image are much smaller (typically less than 10%) than non-diseased areas. Please note that the skewed distribution of RCT in an ultrasound image may lead to poor predictive performance in the deep-learning-based analysis because such an imbalanced dataset forces the pixel-wise classification algorithm to be biased to the majority class, i.e., the sparse number of pixels, which indicate a specific class, can be considered to be imbalanced data distributions for the segmentation tasks; (3) In addition, the low contrast and noisy environment in the segmentation of ultrasound images can degrade the segmentation performance of deep-learning-based algorithms. Therefore, an advanced deep-learning algorithm further needs to be developed for the better diagnosis of RCT in ultrasound images [17–19].

Therefore, in this study, we propose a convolutional neural network (CNN)-based deep-learning architecture, denoted as a Segmentation Model Adapting pRe-Trained Classification Architecture (SMART-CA), for an accurate segmentation of RCT in USG. Here, in addition to a trainable encoder (normal encoder), we implemented a pre-trained encoder [20] into SMART-CA to detect the location of the RCT prior to the RCT segmentation. Furthermore, we developed a novel integrated-on-positive-loss function (IPLF) to mitigate the issues caused by an imbalanced dataset such as the RCT dataset in the optimization of the SMART-CA. In this study, we examine whether the IPLF enhances the performance of the SMART-CA in the segmentation of an RCT in an imbalanced dataset. In addition, we compare the SMART-CA with other deep-learning state-of-the-art and conventional handcrafted models to assess the performance of the SMART-CA for the segmentation of RCT, thus demonstrating the potential of the SMART-CA for a better diagnosis of locations of RCT using USG and an analysis in a clinical setting.

2. Methods

2.1. Dataset

An ultrasound imaging (UI) system for the diagnosis of locations of RCT was constructed in a previous study [3]. Clinical experiments were conducted on 35 patients who had RCTs of different sizes (massive, large, medium, and small) and states using the constructed system. A total of 1400 ultrasound images of both shoulders were acquired to generate datasets for both the RCT and healthy shoulder. Among 1400 ultrasound

images, the number of ultrasound images of the RCT shoulder is 1280 while the number of ultrasound images of the healthy shoulder was 120. The ultrasound images from patients were randomly shuffled to construct datasets for the training and testing of the deep learning models. The images from 21 patients were utilized for a training set, the images from 7 patients were used as a validation set, and the images from another 7 patients were used as a test set. The training, validation and test sets included 840, 280, and 280 images respectively.

Figure 1 shows the samples of acquired images. To annotate the datasets, the acquired US images were divided into two classes: Class-0 and Class-1. Class-1 indicates the regions of RCTs which include all objects except for the RCT regions. Annotations were confirmed by two professional orthopedic doctors. However, the datasets for RCTs are imbalanced because the regions of the RCTs were small within the field of view (FoV) of the ultrasound images. Figure 1 shows the distribution of the RCT regions corresponding to the US images. This demonstrates that the dataset is imbalanced with the small area of the RCTs. The term sparse is utilized to indicate the small number of pixels in RCTs whose area is smaller than the background area, and thus the RCT (Class-1) is a sparse set of hard examples [21]. Therefore, the imbalanced training with an imbalanced dataset can degrade the performance of the deep learning algorithm in the segmentation of the RCT since the optimization of the network is biased toward one class [21,22]. Since the number of pixels of the background are much higher than that of RCTs, Class-0 is considered to be an easy case while Class-1 is considered to be a difficult case [21].

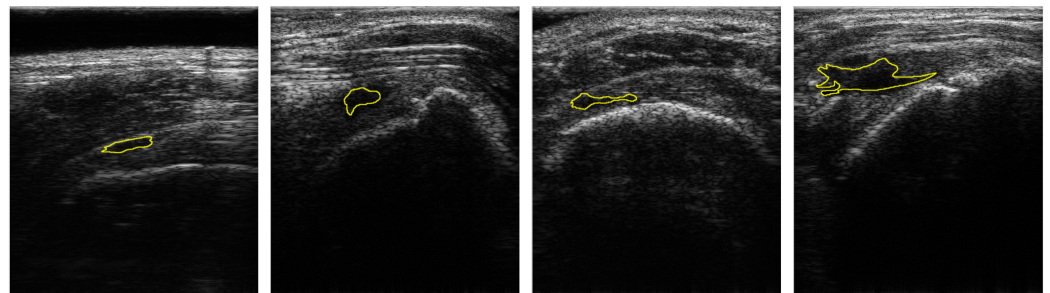


Figure 1. samples of US images and the ground truths of Rotator-Cuff Tears. The ground truths are overlaid as a yellow line. Using the system of which pitch size is 0.3 mm, aperture size is 4 mm × 38 mm, capable frequency is 5 to 14 MHz, and imaging frequency for the clinical experiment is 13.3 MHz.

2.2. Integrated-on-Positive-Loss Function

To resolve the issue coming from the imbalanced dataset during the training, focal loss [21] for dense objects was proposed. The focal loss lightens the loss-weights on dense objects. However, a cross-entropy, which weights a specific class when calculating the cross-entropy loss, was developed as a relatively balanced learning method. Here, we implemented an integrated-on-positive-loss function (IPLF), which is a more effective way to train deep-learning algorithms with imbalance datasets:

$$\mathcal{L}(y, \hat{y}) = y \log \left(1 - \left(\alpha + \frac{1}{\hat{y}} \right)^2 \log(\hat{y}) \right) - (\beta \hat{y})^2 (1 - y) \log(1 - \beta \hat{y}) \quad (1)$$

where \hat{y} and y are probabilities of the prediction and the ground truth respectively, and α and β are gradient-weight constants. y is a linear distribution from zero to 1. \hat{y} is a value one of 0 and 1. The values of α and β are set to 0.5 and 0.95, respectively. It illustrates the selection process for α and β in the discussion section. To effectively train the sparse class from imbalanced datasets, the IPLF modifies the gradients of the trainable variables by decreasing the value of the loss function for a dense class while increasing the value of a loss function for a sparse class. Therefore, for the sparse class as an RCT, the gradients are

increased by the IPLF. By contrast, for a dense class as a background object, the overall gradients become lower by the IPLF.

As the primary task in this study is pixel-wise binary classification, the value of ground truth can only be a zero or one. As shown in Figure 2a,c, the value and gradient of the IPLF, which are illustrated as a black line, are lower than those of other loss functions. Thus, the IPLF slowly optimizes the deep learning model when the values of the ground truth of the easy samples are zero because smaller penalties are added to the incorrectly predicted values with smaller gradient values.

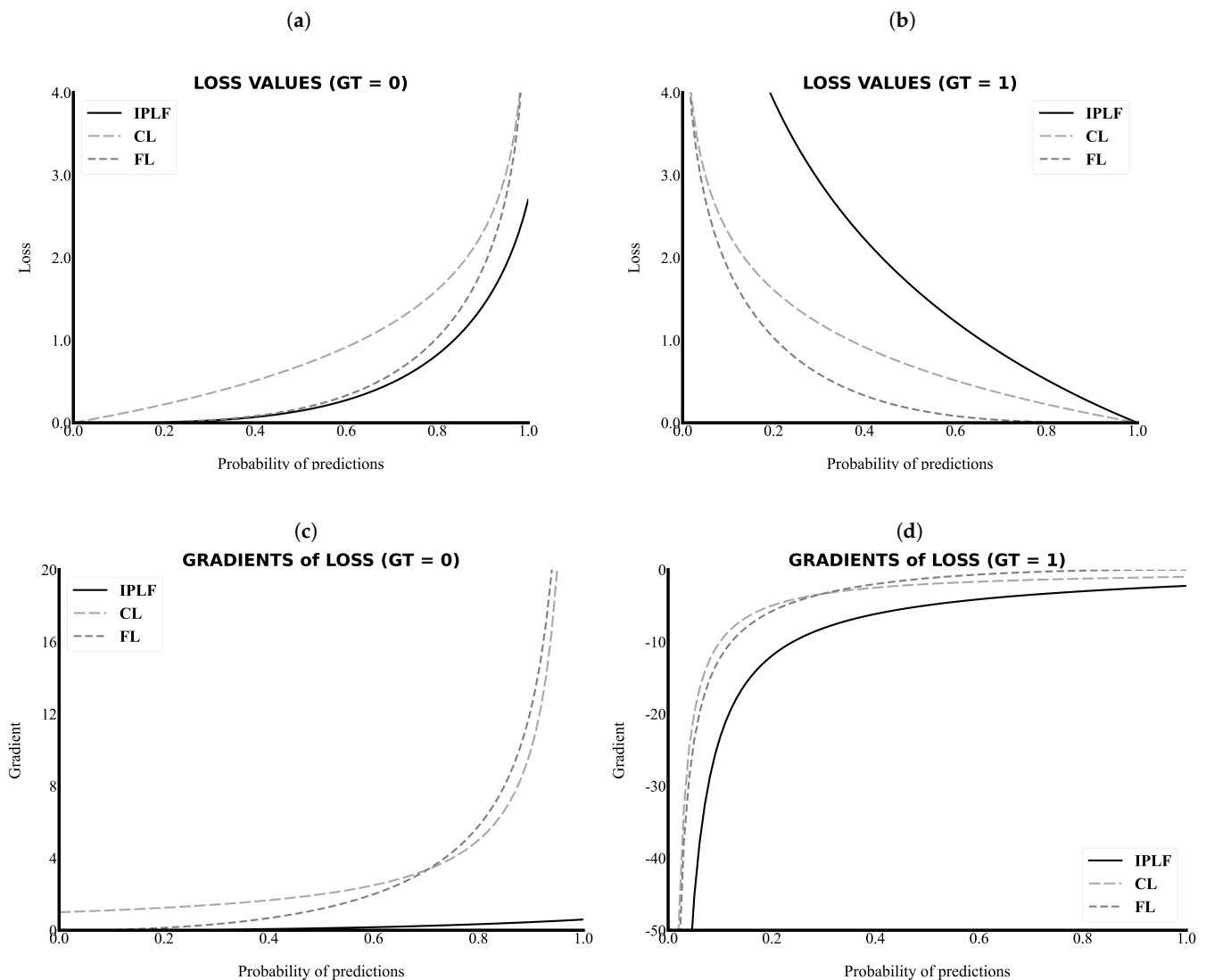


Figure 2. The loss values and gradients along the probability of predictions. The IPLF has a lower value and gradient in the case of the background (GT = 0) and a higher value and gradient in the case of the RCT (GT = 1). (a) Loss versus Probability of predictions when the ground truth is 0, (b) Loss versus Probability of predictions when the ground truth is 1, (c) Gradient versus Probability of predictions when the ground truth is 0, and (d) Gradient versus Probability of predictions when the ground truth is 1. IPLF, CL, FL indicate integrated-on-positive-loss function, cross-entropy Loss, and focal Loss, respectively.

By contrast, as shown in Figure 2b,d, the value and gradient of the IPLF are higher than those of other loss functions when the values of the ground truth of the sparse samples are 1. Please note that in Figure 2d the absolute values of the gradient of the IPLF are higher than those of the others. Therefore, the IPLF optimizes the deep-learning model to shrink for the positive area of the RCT because larger penalties are added to the incorrectly predicted values with higher gradient values. As a result, a comparison graph of the values

and gradients demonstrates that the IPLF provides a higher effect to optimize the positive area of the RCT and a lower effect to optimize the negative area. Thus, the IPLF can focus more on revealing the positive area of the RCT rather than the background in comparison to other loss functions.

2.3. Architecture of the SMART-CA

We proposed SMART-CA for a better segmentation of RCT in ultrasound images by resolving the problems caused by the low resolution and speckle noise of US images. SMART-CA adopts an encoder-decoder structure mainly used in semantic segmentation deep learning models such as U-Net and SegNet. It consists of a dual encoder architecture by adding a pre-trained encoder to an encoder part. In a previous study [23], the pre-trained architecture was utilized to effectively extract a specific feature map [24]. Therefore, SMART-CA was designed to use the pre-trained architecture to extract specific feature maps related to an RCT. The SMART-CA consists of three key components: (1) a pre-trained encoder, (2) trainable encoder, and (3) decoder. The pre-trained and trainable encoders have the same structure, including combined multiple convolution operations and activation functions. The variables in the trainable encoder are optimized to accurately predict the RCT. By contrast, the pre-trained encoder only has constant variables but is not trained during the training of SMART-CA. However, pre-trained and trainable encoders do not share any variables and have arbitrary variables. Here, the architecture of the pre-trained encoder was constructed based on VGG19, which is commonly used in a classification task. More detailed architectures of SMART-CA are illustrated in Appendix A Tables A1 and A2.

Furthermore, Figure 3 illustrates the performance of the segmentation of SMART-CA along with the degree of optimization of a pre-trained encoder. As shown in Figure 3, the segmentation performance was improved as the classification performance of the pre-trained encoder was improved. Therefore, the pre-trained encoder, which can generate the best performance, (Figure 3) is utilized to construct the architecture of SMART-CA.

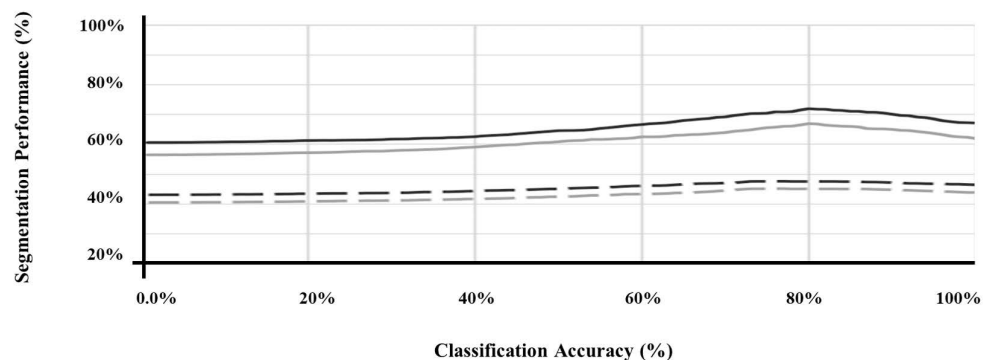


Figure 3. The segmentation performance of SMART-CA according to the classification accuracy of pre-trained encoder. U-Net (black) and FusionNet (gray) using the original ultrasound image (straight line) and with speckle noise of which PSNR is 15 db (dashed line).

The architecture of VGG19 was used as a baseline architecture for the pre-trained encoder because SMART-CA requires a classification task in addition to a segmentation task. Although the architecture of an encoder part of the U-Net is generally used for a segmentation task, we here utilized the architecture of VGG19 for SMART-CA since the performance of SMART-CA for the segmentation of RCT was degraded when the architecture of U-Net [25] was used as the pre-trained encoder instead of VGG19 [26], the performance of SMART-CA for the segmentation of RCT was degraded. Table 1 shows a comparison of the segmentation performance of SMART-CA with different encoder and decoder architectures. As shown in Table 1, SMART-CA offered the highest Dice coefficient of 0.771 when VGG19 and U-Net were used as baseline architectures of the encoder and decoder, respectively. VGG19 and ResNet151 [27] are common classification architectures.

Therefore, when they were implemented in the decoder part of SMART-CA, the overall structure was reversed, and a maxpooling operation was replaced with a deconvolution operation.

Table 1. Dice coefficients of SMART-CA with different baseline architecture of encoder and decoder parts in the segmentation of RCTs.

Baseline Model	Encoder						
	VGG19	Google Net	ResNet 151	U-Net	SegNet	Dense Net	Fusion Net
VGG19	0.525	0.537	0.504	0.513	0.536	0.525	0.527
ResNet151	0.568	0.592	0.572	0.536	0.581	0.478	0.498
Decoder U-Net	0.771	0.702	0.672	0.625	0.691	0.718	0.325
SegNet	0.770	0.769	0.684	0.655	0.733	0.692	0.657
FusionNet	0.750	0.761	0.659	0.678	0.492	0.632	0.655

2.4. Training of SMART-CA

The pipeline used for training SMART-CA is illustrated in Figure 4. Figure 4a illustrates the training pipeline of the pre-trained encoder. By solving the classification tasks that determine the existence of the RCT in US images, the variables of the pre-trained encoder are optimized to find the RCT. In other words, the pre-trained encoder is optimized with a training set for a binary classification task, which classifies the existence of the RCT in US input images (class 0, No RCT; class 1, RCT).

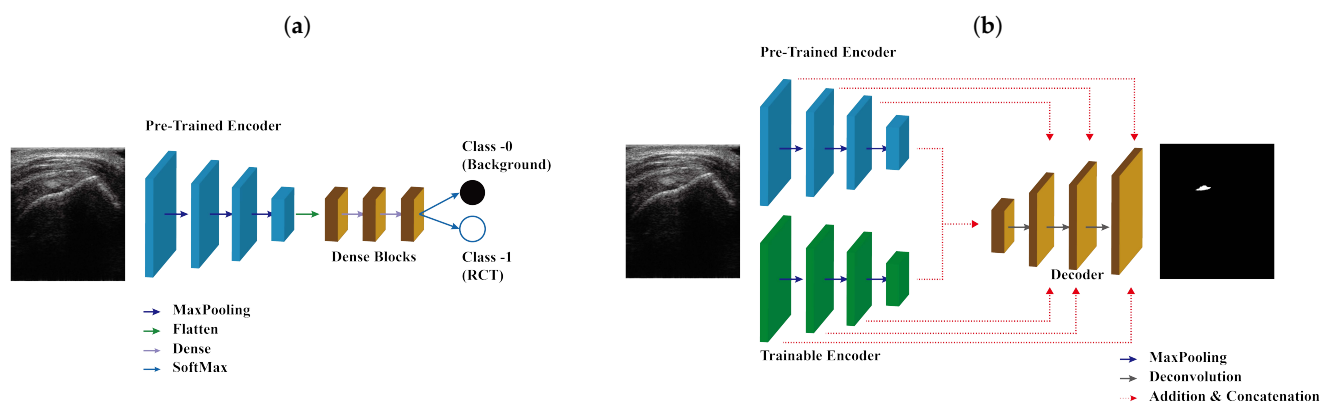


Figure 4. The pipeline of the training SMART-CA. SMART-CA consists of three parts; a pre-trained encoder, a trainable encoder, and a decoder. (a) The pre-trained encoder trained by solving the classification task that determines the existence of the RCT in US images. Then, (b) the trainable encoder and decoder are trained by solving the segmentation task that localizes the RCT. Please note that the pre-trained encoder is optimized in (a) not (b).

Figure 4b illustrates the training pipeline of SMART-CA using the same training set of ultrasound images. First, the pre-trained encoder is trained for a classification task, which is a binary inference of the presence of RCT regions in an input ultrasound image. Using the same method to optimize other conventional deep learning models of classification tasks, the pre-trained encoder is optimized by using the IPLF since the number of the dataset for the classification is also imbalanced as illustrated in the dataset's description. While training the pre-trained encoder, the generated values become arbitrary values of between zero and 1 when the predictions are generated from a SoftMax layer. A value close to zero indicates that the probability of an RCT is extremely low, whereas a value

close to 1 indicates an extremely high existence probability. By utilizing the distribution of the generated linear probability through the pre-trained encoder, the existence of an RCT is well predicted.

The trainable encoder and decoder of SMART-CA are optimized through a backpropagation method using ultrasound images of the same training set and the corresponding annotation images showing the RCT area. While training the trainable encoder and decoder, the generated values become arbitrary values of between zero and 1 pixel by pixel when the predictions generated from a decoder pass through a SoftMax layer. Thus, the generated predicted segmentation map includes the pixel-wise classification in the result of the existence of the RCT with the same size as the input ultrasound images. Similar to the classification task, a value close to zero indicates that the existence probability of RCT is extremely low, whereas a value close to 1 indicates an extremely high existence probability in a pixel-by-pixel manner. As a result, the fully optimized SMART-CA correctly predicts the regions where the RCT is present in such a pixel-by-pixel approach. Note that during this training phase, the pre-trained encoder is not optimized, and therefore the values of the parameters of the pre-trained encoder do not change.

2.5. Experimental Setup

In this study, the following experiments were conducted to verify the performance of the IPLF in an imbalanced dataset and SMART-CA with IPLF. (1) To verify the performance of the IPLF, the IPLF was compared with other loss functions in a semantics segmentation with an imbalanced dataset. (2) The performance of the SMART-CA with the IPLF is compared with that of conventional computer vision-based and deep learning-based state-of-the-art models.

For implementation of deep-learning architectures including SMART-CA and other state-of-the-art models, a public platform, Tensorflow [28], is used. During the training phase, the mini-batch size is 8; in addition, group normalization [29] is used because the batch size is too small to use a general normalization such as batch normalization [30]. Each model was trained for 250 epochs with 5-fold cross-validation. Each fold has 280 images, and the ratio of a training set, a validation set, and a test set was 3:1:1. The number of training images is 840. In addition, data augmentation techniques including horizontal flip, intensity variation, and cropping with resizing were applied to the datasets. Thus, a total of 5040 images were used for training each network. The training of the network was realized by using two Intel Xeon E5-2620v4 CPUs @ 2.1GHz and 4 NVIDIA TITAN Xp GPUs (12 GB) (Santa Clara, CA, USA).

SMART-CA and the other compared deep-learning architectures are implemented in the same environment based on Tensorflow. They are trained using the same hyperparameters. The deep-learning models are optimized using AdamOptimizer by using the stochastic gradient descent method [31] with a mini-batch size of 8. The first and second decays of the hyperparameters used in AdamOptimizer were set to 0.99 and 0.999, respectively. The learning rate is initially set to 0.001 but is reduced by half during every 40-epochs while training the deep-learning models [32]. Here, a dropout is not applied to the training of the models. A SeLU activation function is used as the activation function when a segmentation task is applied. During the process of optimizing a pre-trained encoder, a classification task is included. All hyperparameters are the same as in the segmentation task. A dropout of 0.75 is applied to the training of the pre-trained encoder. However, the dropout is not applied to the pre-trained decoder when the classification task is tested.

To examine how SMART-CA is robust to the noise of US images, SMART-CA performance in segmenting an RCT was compared under different speckle noise levels of the US images. Randomly generated speckle [33] noises were added to the original US images. Figure 5 shows example images with different levels of speckle noises.

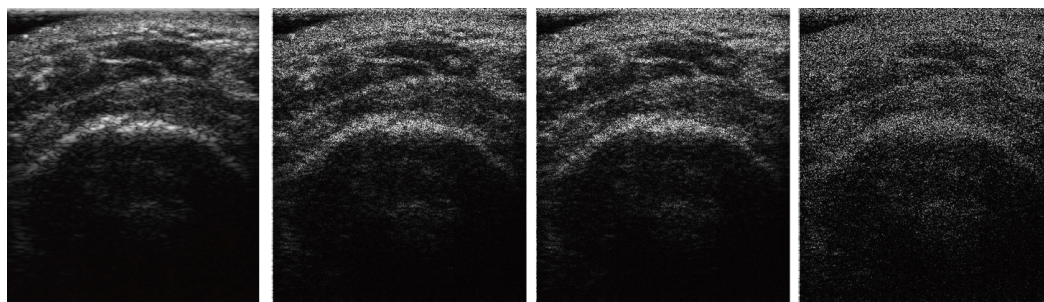


Figure 5. The images at different speckle noise level. Each column indicates original, 15 db, 12 db, and 10 db images.

2.6. Evaluation Metrics

Precision and recall (= sensitivity) were utilized as approximation metrics to assess the performance of algorithms for the segmentation of RCTs in ultrasound images. Because the predicted positive area of the RCT is relatively smaller than the background, the precision is more relevant to positive regions than the specificity (= true negative rate). Therefore, precision was utilized instead of specificity. The definitions of the precision, recall, and Dice coefficient are as follows:

$$\text{Precision} = \frac{TP}{TP + FP} \quad (2)$$

$$\text{Recall} = \frac{TP}{TP + FN} \quad (3)$$

$$\text{Dice Coefficient} = \frac{2TP}{2TP + FP + FN} \quad (4)$$

$$\text{Accuracy} = \frac{TP + TN}{TP + FP + FN + TN} \quad (5)$$

$$\text{Specificity} = \frac{TN}{FP + TN} \quad (6)$$

$$\text{Balanced Accuracy (B.A.)} = \frac{\text{Recall} + \text{Specificity}}{2} \quad (7)$$

where TP, FP, FN, TN indicate the true positive, false positive, false negative, and true negative between the annotations and predictions, respectively. Precision, Recall, Dice coefficient, Accuracy, and Balanced Accuracy (B.A.) were utilized to evaluate the performance of SMART-CA for a segmentation task. Also, accuracy was utilized to evaluate the performance of SMART-CA for the binary classification related to the training of the pre-trained encoder.

3. Results

3.1. Effects of IPLF in the Segmentation of RCT

Deep-learning architectures optimized using the IPLF are compared with those using other loss functions to evaluate the performance of IPLF for the segmentation of RCTs in US images. For the evaluation, precision, recall, and Dice coefficients of the deep-learning architectures are acquired. As the deep-learning architecture, U-Net [25], FusionNet [34], S³ [35], and Hough-CNN [36] are used here. The architectures are optimized using the binary cross-entropy loss (BCE-loss), F1-Loss, focal loss [21], and IPLF, respectively.

Table 2 shows the segmentation performance of deep-learning architectures optimized using IPLF and other loss functions in terms of precision, recall, and Dice coefficient. The IPLF offers the highest precision, recall, and Dice coefficient values of 0.6693, 0.9302, and 0.7366, compared to other loss functions. The precision, recall, and Dice coefficient values of IPLF are improved by +44.29%, +8.09%, and +37.56% from those of other loss functions at S3. The improved recall value indicates that the positive predictions of the

RCT become more accurate even in such imbalanced datasets. As a result, as shown in Table 2, the IPLF allows predicting the RCT more accurately than the other loss functions, demonstrating its capability for mitigating the potential issues caused by the imbalanced US images of RCT.

Table 2. Comparisons of IPLF and other loss functions at different baseline architectures in terms of various evaluation metrics. The highest values are highlighted as **bold**.

		Binary Cross-Entropy Loss	F ₁ -Loss	Focal Loss	Integrated on Positive Loss Function
U-Net	Precision	0.2304	0.3600	0.4075	0.4763
	Recall	0.8553	0.8913	0.8480	0.8849
	D.C.	0.3630	0.5129	0.5505	0.6192
	Accuracy	0.6679	0.8127	0.8468	0.8796
	B.A.	0.7499	0.8471	0.8473	0.8819
FusionNet	Precision	0.2106	0.3238	0.4009	0.5129
	Recall	0.9040	0.9054	0.8690	0.9041
	D.C.	0.3417	0.4770	0.5486	0.6545
	Accuracy	0.6145	0.7749	0.8418	0.8944
	B.A.	0.7412	0.8517	0.8537	0.8986
S ³	Precision	0.2264	0.3149	0.5260	0.6693
	Recall	0.8911	0.8975	0.8459	0.8190
	D.C.	0.3610	0.4663	0.6487	0.7366
	Accuracy	0.6511	0.7726	0.8986	0.9352
	B.A.	0.7562	0.8273	0.8755	0.8843
Hough-CNN	Precision	0.2326	0.3138	0.4767	0.5021
	Recall	0.8761	0.8592	0.8493	0.9302
	D.C.	0.3676	0.4597	0.6106	0.6521
	Accuracy	0.6665	0.7765	0.8802	0.8902
	B.A.	0.7583	0.8127	0.8667	0.9077

3.2. Evaluation of Performance of SMART-CA for the Segmentation of RCT in US Images

To evaluate the performance of our proposed SMART-CA for segmentation, SMART-CA is compared with other conventional computer-vision-based algorithms and CNN-based state-of-the-art models. Please note that SMART-CA has a pre-trained encoder that is optimized through the classification task. The pre-trained encoder is optimized in advance to achieve 80% accuracy on the test and validation sets.

Table 3 compares the performance of SMART-CA with that of the other models in terms of the Dice coefficient, in US images at different speckle noise level. The Dice coefficients of SMART-CA are higher than those of the other algorithms. In particular, at noise level 3 (PSNR = 10), other models show an extremely low performance in the segmentation of RCT, but SMART-CA is capable of acceptably segmenting the RCT with an improved Dice coefficient value of +43.3% and +37.7% higher than those of the computer-vision and deep-learning algorithms, respectively. These results demonstrate that SMART-CA predicts an RCT better than the other algorithms, even in noisy environments. Moreover, for a further evaluation of SMART-CA with the IPLF, we compared the performance of SMART-CA and other deep-learning models with the IPLF or other common loss functions at different speckle noise levels.

Table 3. The performance of SMART-CA with IPLF and other models at different speckle noise levels. The highest Dice Coefficient values are highlighted as **bold**.

Speckle Noise	Watershed	Active Contour	U-Net	S ³	Hough-CNN	SMART-CA
Original	0.562	0.636	0.595	0.715	0.621	0.736
PSNR = 15	0.406	0.486	0.470	0.563	0.569	0.609
PSNR = 12	0.168	0.224	0.307	0.378	0.392	0.546
PSNR = 10	0.051	0.107	0.227	0.292	0.395	0.484

Figure 6 illustrated the graph of the quantitative analysis of the performance of SMART-CA, compared to those of other state-of-the-art models including U-Net, S³, and Hough-CNN for segmentation of RCT. Figure 6, which is related to Appendix B Table A3, illustrates that the precision, recall, and dice coefficient values of SMART-CA in the segmentation of RCT from the captured US images were 0.604% (+38.4%), 0.942% (+14.0%), and 0.736% (+38.6%), respectively. Furthermore, the precision, recall, and dice coefficient values of SMART-CA in the segmentation of RCT from US images with severe speckle were 0.337% (+22.5%), 0.860% (+15.8%), and 0.484% (+28.5%), respectively. The recall and Dice coefficient values are higher than other models with IPLF or other loss functions in the case of the speckle-noised environment. The detailed quantitative result of the Figure 6 is illustrated in Appendix B.

The segmentation results are illustrated in Figure 7. As shown in Figure 7, a comparison of the predicted images by SMART-CA and other state-of-the-art models such as U-Net, S³, and Hough-CNN, which are optimized with three loss functions using speckle-noised US images, is illustrated.

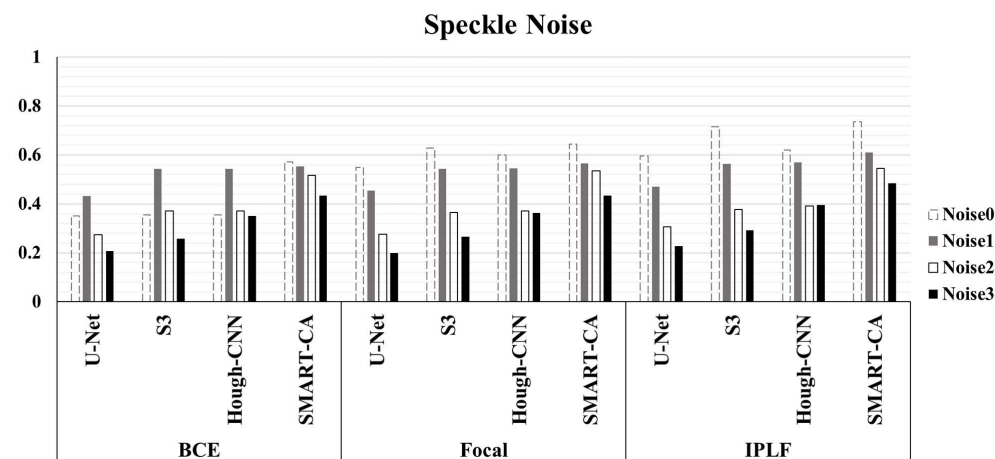


Figure 6. The evaluation of Dice Coefficient using different deep-learning models and different loss functions using randomly generated speckle-noised US images. In most cases, the performance of SMART-CA with IPLF shows the best performance among them despite the noisy environment of US images.

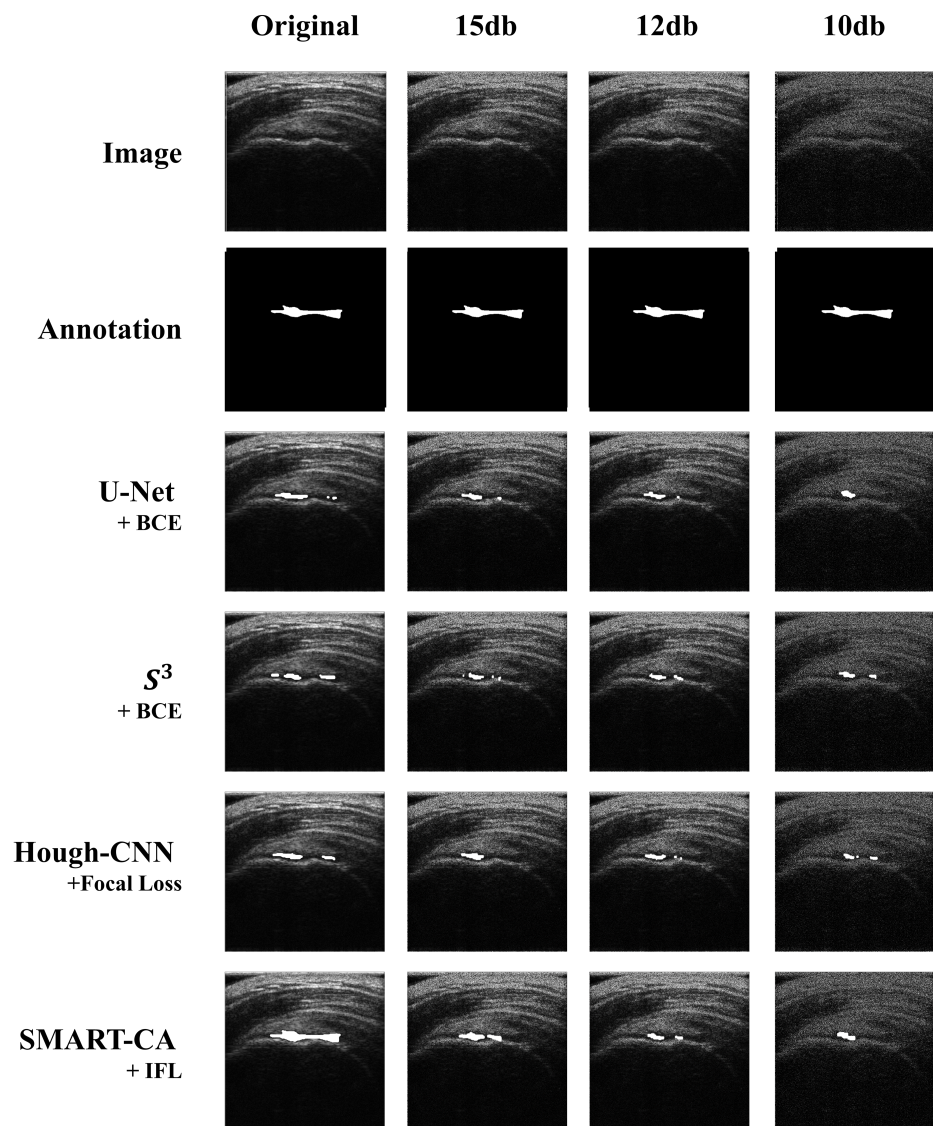


Figure 7. Comparison of the segmented results obtained by SMART-CA (Ours) to other state-of-the-art models including U-Net, S^3 , and Hough-CNN according to the speckle-noised images.

4. Discussion

4.1. Analysis of SMART-CA

In this study, we demonstrated that the proposed SMART-CA outperforms other state-of-the-art models in the segmentation of RCTs in ultrasound images. To enhance its performance, we incorporated a pre-trained encoder into the architecture of the SMART-CA. The pre-trained encoder was trained through a classification task which predicts the presence of an RCT in ultrasound images. The pre-trained encoder needed to be sufficiently optimized to achieve a good performance in the segmentation task because it utilizes the features that were extracted during the classification phase. However, the segmentation performance decreased when the accuracy of the pre-trained encoder in the classification task was higher than 80%. Therefore, we incorporated the pre-trained encoder, which offers 80% accuracy for the classification task, into the SMART-CA. The reason why the segmentation performance of SMARTCA is degraded by increasing the accuracy of the pre-encoder over 80% for classification tasks should be elucidated, which remains for further study.

4.2. Analysis of IPLF

To select the optimal hyperparameters (α and β) of IPLF for SMART-CA, the effect of hyperparameters on a training bias (gradients) was examined. In particular, the gradients of IPLF at different α and β values were investigated when the ground truth was 0 and 1. Figure 8 illustrates the gradients of IPLF at different α and β values. When the value of the ground truth is 0, the gradients values of IPLF are mainly determined by alpha. The lower α results in the slower optimization of SMART-CA. Here, two constraints were considered: (1) Lower gradient values of IPLF than focal loss. (2) Stable lower gradients for the dataset that would be predicted as Negative (background) optimizes the deep learning model with small enough epochs. Since IPLF becomes the same as focal loss when α is 1, α should be less than 1 to realize that the gradients of IPLF are less than those of focal loss. By doing so, the training bias on Negative can be reduced. Therefore, the value of α was selected to be 0.95 to achieve the best training performance using a grid search algorithm with the values in [0.50, 0.95] with increasing steps of 0.05.

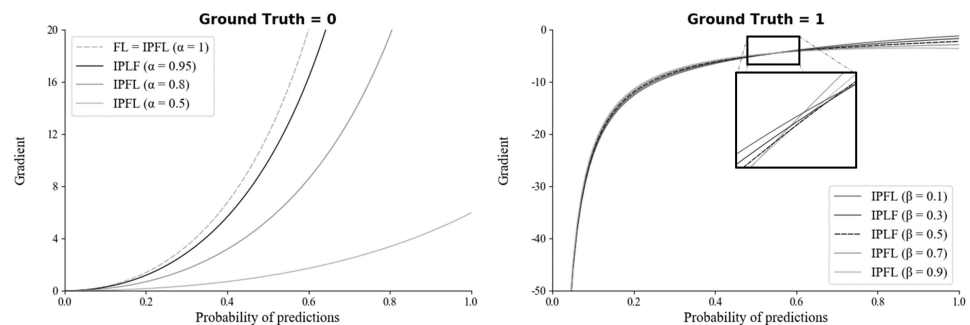


Figure 8. The gradients of the IPLF for each hyper-parameter of α and β when ground truth is 0 (left) and 1 (right).

On the other hand, when the value of the ground truth is 1, the gradients of IPLF are mainly determined by β . Here, similar to α , the constraint of large enough gradients was considered to increase the training bias of dataset to be predicted as positive. Therefore, the value of β was here selected to be 0.5 since the value of β at 0.5 results in the mean-gradient value of IPLF, resulting that a training bias rate on Positive (RCT) becomes higher in every probability. Therefore, with the optimal hyperparameters, SMART-CA can be better trained with a dataset, which exhibits the skewed RCT distribution (positive).

4.3. Feature Extraction by SMART-CA

The pre-trained encoder, which extracts features related to an RCT, provides local information to the RCT with a decoder when a segmentation task is conducted. Simultaneously, the features extracted from a trainable encoder are also transferred to the decoder. As a result, SMART-CA can exploit both pre-extracted features from the pre-trained encoder for the classification of RCT and the extracted features from the trainable encoder for the segmentation of the RCT. To verify that the different features are extracted from both encoders, the class activation map (CAM) [37] of CNNs are used to visualize the explanations of the CNNs by the encoders and decoder of SMART-CA. In Figure 9, the CAM demonstrates that different features are generated by each encoder. The extracted features from each encoder are used in the decoder pipeline to segment the RCT. As shown in Figure 9c, the overall area of the shoulder is focused on by the trainable encoder. By contrast, as shown in Figure 9d, the pre-trained encoder focuses more on the RCT area than the trainable encoder because the pre-trained architecture is already trained for the classification tasks to find the existence of the RCT in the US images. Therefore, the pre-trained encoder would be able to extract more informative features than the trainable encoder; therefore, SMART-CA with a pre-trained encoder would be able to segment the RCT despite the low resolution and noises of the US images.

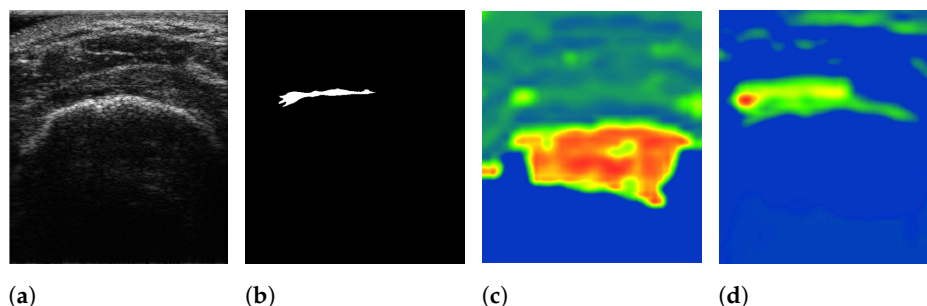


Figure 9. The visualization of data using SMART-CA and Class Activation Map (CAM). (a) raw input image, (b) ground truth, (c) CAM generated by the trainable encoder, and (d) CAM generated by the pre-trained encoder of SMART-CA. The red color indicates the higher attention from the CNN-based architecture and the blue color indicates the lower attention.

In addition, the activation-based heatmap is analyzed to verify the impact of each layer on the US images. These heatmaps are generated by the layer of each Down block of Part I (see Appendix A Table A1) of the encoders excluding the MaxPooling layers. As shown in Figure 10a, an RCT is present in the selected US images. The high-level features of the pre-trained encoder focus on the RCT area, as illustrated in Figure 10c. Similarly, it is recognizable that the low-level features of the pre-trained encoder would be able to extract the features of the RCT because the decoder, which uses the low-level features of the encoder, will be able to generate the RCT-related CAM, as shown in Figure 9d. By contrast, however, the features generated by the trainable encoder are disturbed by the noises of the US images instead of focusing on the RCT area in both high- and low-level features, as illustrated in Figure 10b. In addition, the activation of the CNNs is disturbed by the noises of the US; therefore, a lower activation will be achieved from the shoulder area. As a result, the activation maps illustrate that SMART-CA with a pre-trained encoder will enable more informative features related to the RCT area despite the low resolution and noisy environment of the US images.

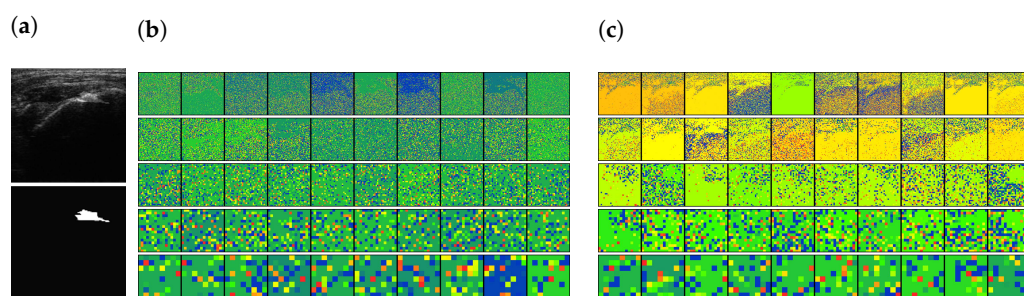


Figure 10. The activation-based visualization of each channel of each layer. (a) raw input image and ground truth of RCT, (b) activation-based heatmap by the trainable encoder, and (c) activation-based heatmap by the pre-trained encoder. The first row, second, third, fourth row are generated by Down1, Down2, Down3, and Down4. The last row is generated by the Flattened layer. The red color indicates the higher attention from the CNN-based architecture and the blue color indicates the lower attention.

4.4. Analysis of Results

The analysis of Table 1, which illustrates the recall generated by F1-Loss is higher than the recall generated by IPLF, is explained here. As illustrated in Table 1, F1-Loss outperformed other loss functions in terms of Recall in most cases. Since each number of $positive = TP + FN$ is the same for all loss functions, and based on Equation (3), the true positive is especially more than other loss functions. It seemed that F1-Loss could predict the positive area with better performance than others. However, Table 1 illustrates precision [Equation (2)], which indicates the ratio of true positive from the predicted positives, i.e., the precisions by F1-Loss are remarkably less than precisions by IPLF. Here, since the

number of *positive* is the same for all loss functions, followings can be calculated based on Equations (2) and (3):

$$TP = Recall \times Positive$$

$$FP = \frac{1 - Precision}{Precision} \times TP = \frac{1 - Precision}{Precision} \times Recall \times Positive \quad (8)$$

Here, since *positive* is the same for all loss functions, ratio of false positives of F1-Loss and IPLF can be calculated as follows:

$$FP_{F1} : FP_{IPLF} = \frac{1 - 0.36}{0.36} \times 0.8913 : \frac{1 - 0.4763}{0.4763} \times 8849 = 1.63 : 1 \quad (9)$$

Here, the result illustrates that the number of false positive generated by F1-Loss is 1.6 times more than the number of false positive generated by IPLF. The result demonstrates that F1-Loss predicts positives 1.6 times more than IPLF, i.e., it can be concluded that recall, the true positive rate, was higher since F1-Loss simply predicts more positives than IPLF. Furthermore, most of the state-of-the-art models, which are optimized using BCE or a focal loss, manifest coarse segmentation results with a void representation of an RCT. Conversely, the IPLF produces better-predicted RCT regions than other common loss functions, particularly in the case of implementation into SMART-CA. As the baseline architecture for SMART-CA, a combination of VGG19 and U-Net was used. However, for the further improvement of SMART-CA for diagnosis of the RCTs, other state-of-the-art models, which can offer better performance than only the combination of VGG19 and U-Net, should be tested. Furthermore, although this paper mainly focused on the noise of US images and the imbalanced problems caused by the small areas of RCTs, the other related issues including the low contrast and unclear boundaries of RCTs need to be resolved. The associated work here remains a future study.

5. Conclusions

In this study, we developed a novel deep-learning architecture, denoted as SMART-CA, using the IPLF and a pre-trained encoder to diagnose a location of RCT with imbalanced and noisy ultrasound images. In particular, the IPLF enhanced the segmentation performance of SMART-CA by resolving the potential issues caused by an imbalanced dataset. In addition, the pre-trained encoder allowed an accurate extraction of the feature maps related to the RCT in the noisy ultrasound images. Our experiments demonstrated that SMART-CA outperforms other state-of-the-art models for the segmentation of RCTs from ultrasound images with both normal and severe speckle noise. The precision, recall, and Dice coefficient values of SMART-CA in the segmentation of RCT from the ultrasound images were 0.604% (+38.4%), 0.942% (+14.0%), and 0.736% (+38.6%), respectively. With better performances than other state-of-the-art algorithms, the proposed SMART-CA can be applied to the diagnosis of various diseases besides RCTs. The precision, recall, and Dice coefficient values of SMART-CA in the segmentation of RCT from ultrasound images with severe speckle noise were 0.337% (+22.5%), 0.860% (+15.8%), and 0.484% (+28.5%), respectively. These enhanced performances indicate that the proposed SMART-CA and IPLF can still work well despite of severely noisy environments than other algorithms. In order to improve SMART-CA's better diagnosis of RCTs, other state-of-the-art models, which can offer better performance than the current simple combination of VGG19 and U-Net, should be tested as a baseline. The associated work here remains to be further investigated.

Author Contributions: Conceptualization, K.L., J.Y.K. and J.Y.H.; methodology, K.L.; software, K.L.; validation, M.H.L., C.-H.C. and J.Y.H.; formal analysis, K.L. and J.Y.K.; investigation, M.H.L.; resources, J.Y.K. and C.-H.C.; data curation, J.Y.K. and C.-H.C.; writing—original draft preparation, J.Y.H.; writing—review and editing, K.L. and J.Y.H.; visualization, K.L. and J.Y.K.; supervision, C.-H.C. and J.Y.H.; project administration, C.-H.C. and J.Y.H.; funding acquisition, J.Y.K. All authors have read and agreed to the published version of the manuscript.

Funding: This work was supported by the Korea Medical Device Development Fund grant funded by the Korea government (the Ministry of Science and ICT, the Ministry of Trade, Industry and Energy, the Ministry of Health & Welfare, the Ministry of Food and Drug Safety) (Project Number: KMDF_PR_20200901_0125, 9991006798), the Ministry of Trade, Industry and Energy (MOTIE) of the Republic of Korea under Grant 10085624, and Bio & Medical Technology Development Program of the National Research Foundation (NRF) funded by the Ministry of Science and ICT of KOREA (No.2017M3A9G8084463).

Institutional Review Board Statement: The study was conducted in accordance with the Declaration of Helsinki, and the protocol was approved by the Ethics Committee of Institutional Review Board of Daegu Catholic University Medical Center (MDCR-20-007) and the clinical trial in this study was in accordance with ethical standards.

Informed Consent Statement: All subjects gave their informed consent for inclusion before they participated in the study.

Data Availability Statement: Not applicable.

Conflicts of Interest: The authors declare no conflict of interest. The funders had no role in the design of the study; in the collection, analyses, or interpretation of data; in the writing of the manuscript, and in the decision to publish the results.

Appendix A

Appendix A.1

Table A1 illustrates the structure of the pre-trained encoder. Here, as the same with general classification architectures, features are extracted by convolution operations, and non-linearity are compensated by adding a SeLU activation function [38]. Finally, after layers are flattened, a predicted output is generated through the Fully Connected and SoftMax layers. The generated output is normalized within a value between 0.0 and 1.0 by the SoftMax layer.

Table A1. The architecture of the pre-trained encoder. Only the architecture of part I is used in SMART-CA.

	Name	Image Size	Operation	Channel
	Input image	256 × 256		3
Part I	Down 1	256 × 256	3 × 3 Conv	64
		256 × 256	3 × 3 Conv	64
		128 × 128	Maxpooling (SeLU)	64
	Down 2	128 × 128	3 × 3 Conv	128
		128 × 128	3 × 3 Conv	128
		64 × 64	Maxpooling (SeLU)	128
	Down 3	64 × 64	3 × 3 Conv	256
		64 × 64	3 × 3 Conv	256
		64 × 64	3 × 3 Conv	256
		64 × 64	3 × 3 Conv	256
		32 × 32	Maxpooling (SeLU)	256
	Down 4	32 × 32	3 × 3 Conv	512
		32 × 32	3 × 3 Conv	512
		32 × 32	3 × 3 Conv	512
		32 × 32	3 × 3 Conv	512
		16 × 16	Maxpooling (SeLU)	512
Part II	Flatten	1	Flatten	16 × 16 × 512
	Fully Connected 1	1	Dense (SeLU activation)	4096
	Fully Connected 2	1	Dense (SeLU activation)	4096
	Fully Connected 3	1	Dense (None activation)	2
	SoftMax	1	SoftMax	2

The predicted output values then indicate the probability of the existence of RCT in an input image. The probability value, which is close to 0.0, indicates that no RCT exists in an input image, whereas the probability value, which is close to 1.0, represents that RCT exists in the input image. The pre-trained encoder is based on a classification structure. Here, prior to training of SMART-CA, the pre-trained encoder is pre-optimized by training of the classification task that determines whether RCT is present or not in US images.

Table A2. The overall architecture of SMART-CA.

Name	Image Size	Operation		Channel	
		Pre-Trained Encoder	Trainable Encoder		
Input image	256 × 256			3	
Encoder	Down 1	256 × 256	3 × 3 Conv	3 × 3 Conv	64
		256 × 256	3 × 3 Conv	3 × 3 Conv	64
		128 × 128	Maxpooling (SeLU)		64
	Down 2	128 × 128	3 × 3 Conv	3 × 3 Conv	128
		128 × 128	3 × 3 Conv	3 × 3 Conv	128
		64 × 64	Maxpooling (SeLU)		128
	Down 3	64 × 64	3 × 3 Conv	3 × 3 Conv	256
		64 × 64	3 × 3 Conv	3 × 3 Conv	256
		64 × 64	3 × 3 Conv	3 × 3 Conv	256
		64 × 64	3 × 3 Conv	3 × 3 Conv	256
		32 × 32	Maxpooling (SeLU)		256
	Down 4	32 × 32	3 × 3 Conv	3 × 3 Conv	512
		32 × 32	3 × 3 Conv	3 × 3 Conv	512
		32 × 32	3 × 3 Conv	3 × 3 Conv	512
		32 × 32	3 × 3 Conv	3 × 3 Conv	512
		16 × 16	Maxpooling (SeLU)		512
Bridge	Bottom	16 × 16	Addition (Down 4)		512
		16 × 16	3 × 3 Conv		512
		16 × 16	3 × 3 Conv		512
Decoder	Upsampling 1	32 × 32	Deconv(Bottom) + 3 × 3 Conv		512
		32 × 32	Concatenate(Upsampling1, Down 4)		1024
		32 × 32	3 × 3 Conv		512
		32 × 32	3 × 3 Conv		512
	Upsampling 2	64 × 64	Deconv(Upsampling1) + 3 × 3 Conv		256
		64 × 64	Concatenate(Upsampling2, Down 3)		512
		64 × 64	3 × 3 Conv		256
		64 × 64	3 × 3 Conv		256
	Upsampling 3	128 × 128	Deconv(Upsampling2) + 3 × 3 Conv		128
		128 × 128	Concatenate(Upsampling3, Down 2)		256
		128 × 128	3 × 3 Conv		128
		128 × 128	3 × 3 Conv		128
	Upsampling 4	256 × 256	Deconv(Upsampling4) + 3 × 3 Conv		64
		256 × 256	Concatenate(Upsampling3, Down 1)		128
		256 × 256	3 × 3 Conv		64
		256 × 256	3 × 3 Conv		64
Logit	Logit	256 × 256	3 × 3 Conv		64
		256 × 256	3 × 3 Conv		2
		256 × 256	SoftMax		2

Appendix A.2

In addition, the overall architecture of SMART-CA, including the pre-trained encoder, is illustrated in Table A2. Since SMART-CA is a CNN-based deep-learning architecture for a segmentation task, the structure after being flattened in the pre-trained encoder is removed out, and Part I of the pre-trained encoder is only included in SMART-CA. Moreover, the structure of a trainable encoder is the same as that of a pre-trained encoder. However, the variables in both encoders are not shared. The decoder is constructed based on the decoder of U-Net [25]. The parallel feature maps, which are extracted from the pre-trained and trainable encoders, are connected with the upsampling part by using a concatenation operation. As shown in the decoder of Table A2, the feature maps from the pre-trained and trainable encoders are combined into one feature map by an addition operation as the residual block of FusionNet [34]. The combined feature is then concatenated in the decoder.

Appendix B

Appendix B.1

As shown in Table A3, SMART-CA with the IPLF shows the improved evaluation metrics of the precision, recall, and Dice coefficient of 0.604%, 0.942%, and 0.736% in the original images, respectively. The recall and Dice coefficient are at most 0.17 and 0.386 point higher than those of the other models with the IPLF or other loss functions. The recall and Dice coefficient values are higher than those of the other models with the IPLF or other loss functions in the speckle-noised environments. In addition, with speckle noise at a PSNR of 10 db, SMART-CA with the IPLF offered the highest precision and Dice coefficient compared to the other models with different loss functions. Moreover, in all the models, the IPLF enhanced the segmentation performance of the models compared to the other loss functions at all noise levels, suggesting that the IPLF is a crucial loss function for achieving a better segmentation of diseases with small sizes in US images.

Table A3. The evaluation metric of IPLF compared to other loss functions by different baseline architectures using speckle-noised US images. The highest are highlighted as **bold**.

Speckle	Metric	U-Net			S ³			Hough-CNN			SMART-CA		
		BCE	Focal	IPLF	BCE	Focal	IPLF	BCE	Focal	IPLF	BCE	Focal	IPLF
Original	Precision	0.22	0.406	0.459	0.222	0.512	0.665	0.224	0.475	0.476	0.443	0.518	0.604
	Recall	0.85	0.845	0.846	0.885	0.815	0.772	0.842	0.816	0.894	0.802	0.853	0.942
	D.C.	0.35	0.549	0.595	0.355	0.629	0.715	0.354	0.6	0.621	0.571	0.645	0.736
	Accuracy	0.655	0.848	0.874	0.649	0.895	0.933	0.664	0.881	0.881	0.868	0.897	0.926
	B.A.	0.740	0.847	0.862	0.752	0.860	0.862	0.742	0.853	0.887	0.839	0.878	0.933
PSNR = 15	Precision	0.296	0.316	0.322	0.423	0.414	0.437	0.413	0.411	0.478	0.42	0.425	0.426
	Recall	0.795	0.806	0.869	0.755	0.793	0.793	0.794	0.805	0.839	0.81	0.85	0.857
	D.C.	0.431	0.454	0.47	0.543	0.544	0.563	0.543	0.545	0.569	0.553	0.566	0.609
	Accuracy	0.771	0.788	0.786	0.861	0.855	0.866	0.854	0.853	0.882	0.857	0.858	0.858
	B.A.	0.781	0.796	0.822	0.815	0.828	0.834	0.828	0.832	0.863	0.836	0.854	0.858
PSNR = 12	Precision	0.163	0.164	0.185	0.242	0.23	0.24	0.24	0.239	0.25	0.375	0.392	0.389
	Recall	0.863	0.859	0.91	0.797	0.877	0.887	0.826	0.837	0.902	0.828	0.844	0.915
	D.C.	0.275	0.276	0.307	0.372	0.365	0.378	0.372	0.372	0.392	0.516	0.536	0.546
	Accuracy	0.502	0.508	0.551	0.705	0.666	0.681	0.695	0.691	0.694	0.831	0.834	0.840
	B.A.	0.660	0.662	0.708	0.746	0.758	0.771	0.752	0.755	0.786	0.829	0.842	0.869
PSNR = 10	Precision	0.118	0.112	0.129	0.154	0.158	0.175	0.221	0.23	0.254	0.295	0.294	0.337
	Recall	0.891	0.897	0.935	0.777	0.819	0.886	0.847	0.852	0.886	0.818	0.827	0.860
	D.C.	0.208	0.199	0.227	0.257	0.265	0.292	0.35	0.363	0.395	0.434	0.434	0.484
	Accuracy	0.257	0.212	0.305	0.510	0.503	0.531	0.657	0.673	0.704	0.767	0.764	0.799
	B.A.	0.535	0.513	0.582	0.627	0.642	0.686	0.740	0.751	0.784	0.789	0.792	0.826

Therefore, these results showed that SMART-CA outperforms other CNN-based state-of-the-art models in the segmentation of an RCT in imbalanced US images, which have a non-uniformly distributed noise.

References

- Gupta, R.; Elamvazuthi, I.; Dass, S.C.; Faye, I.; Vasant, P.; George, J.; Izza, F. Curvelet based automatic segmentation of supraspinatus tendon from ultrasound image: a focused assistive diagnostic method. *Biomed. Eng. Online* **2014**, *13*, 157. [CrossRef]
- Raikar, V.P.; Kwartowitz, D.M. Towards predictive diagnosis and management of rotator cuff disease: Using curvelet transform for edge detection and segmentation of tissue. In Proceedings of the Medical Imaging 2016: Ultrasonic Imaging and Tomography, San Diego, CA, USA, 28–29 February 2016; p. 97901P.
- Lee, M.H.; Kim, J.Y.; Lee, K.; Choi, C.H.; Hwang, J.Y. Wide-Field 3D Ultrasound Imaging Platform With a Semi-Automatic 3D Segmentation Algorithm for Quantitative Analysis of Rotator Cuff Tears. *IEEE Access* **2020**, *8*, 65472–65487. [CrossRef]
- Read, J.W.; Perko, M. Shoulder ultrasound: diagnostic accuracy for impingement syndrome, rotator cuff tear, and biceps tendon pathology. *J. Shoulder Elb. Surg.* **1998**, *7*, 264–271. [CrossRef]
- Kartus, J.; Kartus, C.; Rostgård-Christensen, L.; Sernert, N.; Read, J.; Perko, M. Long-term clinical and ultrasound evaluation after arthroscopic acromioplasty in patients with partial rotator cuff tears. *Arthrosc. J. Arthrosc. Relat. Surg.* **2006**, *22*, 44–49. [CrossRef] [PubMed]
- Okoroha, K.R.; Fidai, M.S.; Tramer, J.S.; Davis, K.D.; Kolowich, P.A. Diagnostic accuracy of ultrasound for rotator cuff tears. *Ultrasonography* **2019**, *38*, 215. [CrossRef] [PubMed]
- Noble, J.A.; Boukerroui, D. Ultrasound image segmentation: A survey. *IEEE Trans. Med. Imaging* **2006**, *25*, 987–1010. [CrossRef]
- Ma, J.; Wu, F.; Jiang, T.; Zhao, Q.; Kong, D. Ultrasound image-based thyroid nodule automatic segmentation using convolutional neural networks. *Int. J. Comput. Assist. Radiol. Surg.* **2017**, *12*, 1895–1910. [CrossRef]
- Mitchell, S.C.; Bosch, J.G.; Lelieveldt, B.P.; Van der Geest, R.J.; Reiber, J.H.; Sonka, M. 3-D active appearance models: Segmentation of cardiac MR and ultrasound images. *IEEE Trans. Med. Imaging* **2002**, *21*, 1167–1178. [CrossRef]
- Anas, E.M.A.; Mousavi, P.; Abolmaesumi, P. A deep learning approach for real time prostate segmentation in freehand ultrasound guided biopsy. *Med. Image Anal.* **2018**, *48*, 107–116. [CrossRef] [PubMed]
- Lenz, I.; Lee, H.; Saxena, A. Deep learning for detecting robotic grasps. *Int. J. Robot. Res.* **2015**, *34*, 705–724. [CrossRef]
- Xian, M.; Zhang, Y.; Cheng, H.D.; Xu, F.; Zhang, B.; Ding, J. Automatic breast ultrasound image segmentation: A survey. *Pattern Recognit.* **2018**, *79*, 340–355. [CrossRef]
- Chang, R.F.; Lee, C.C.; Lo, C.M. Computer-aided diagnosis of different rotator cuff lesions using shoulder musculoskeletal ultrasound. *Ultrasound Med. Biol.* **2016**, *42*, 2315–2322. [CrossRef]
- Lee, H.; Park, J.; Hwang, J.Y. Channel Attention Module with Multi-scale Grid Average Pooling for Breast Cancer Segmentation in an Ultrasound Image. *IEEE Trans. Ultrason. Ferroelectr. Freq. Control* **2020**, *67*, 1344–1353 [CrossRef]
- Li, M.; Dong, S.; Gao, Z.; Feng, C.; Xiong, H.; Zheng, W.; Ghista, D.; Zhang, H.; de Albuquerque, V.H.C. Unified model for interpreting multi-view echocardiographic sequences without temporal information. *Appl. Soft Comput.* **2020**, *88*, 106049. [CrossRef]
- Choi, H.H.; Lee, J.H.; Kim, S.M.; Park, S.Y. Speckle noise reduction in ultrasound images using a discrete wavelet transform-based image fusion technique. *Bio-Med. Mater. Eng.* **2015**, *26*, S1587–S1597. [CrossRef]
- Badrinarayanan, V.; Kendall, A.; Cipolla, R. Segnet: A deep convolutional encoder-decoder architecture for image segmentation. *IEEE Trans. Pattern Anal. Mach. Intell.* **2017**, *39*, 2481–2495. [CrossRef]
- Kim, K.; Chun, S.Y. SREdgeNet: Edge Enhanced Single Image Super Resolution using Dense Edge Detection Network and Feature Merge Network. *arXiv* **2018**, arXiv:1812.07174.
- Wang, Z.; Simoncelli, E.P.; Bovik, A.C. Multiscale structural similarity for image quality assessment. In Proceedings of the Thrity-Seventh Asilomar Conference on Signals, Systems & Computers, Pacific Grove, CA, USA, 9–12 November 2003; pp. 1398–1402.
- Johnson, J.; Alahi, A.; Li, F. Perceptual Losses for Real-Time Style Transfer and Super-Resolution. In Proceedings of the European Conference on Computer Vision, Amsterdam, The Netherlands, 11–14 October 2016. Available online: <https://arxiv.org/pdf/1603.08155.pdf> (accessed on 22 March 2021).
- Ross, T.Y.L.P.G.; Dollár, G. Focal loss for dense object detection. In Proceedings of the IEEE Conference on Computer Vision and Pattern Recognition, Honolulu, HI, USA, 21–26 July 2017.
- Yan, Y.; Chen, M.; Shyu, M.L.; Chen, S.C. Deep learning for imbalanced multimedia data classification. In Proceedings of the 2015 IEEE International Symposium on Multimedia (ISM), Miami, FL, USA, 14–16 December 2015; pp. 483–488.
- Han, X.; Zhong, Y.; Cao, L.; Zhang, L. Pre-trained alexnet architecture with pyramid pooling and supervision for high spatial resolution remote sensing image scene classification. *Remote Sens.* **2017**, *9*, 848. [CrossRef]
- Marmanis, D.; Datcu, M.; Esch, T.; Stilla, U. Deep learning earth observation classification using ImageNet pretrained networks. *IEEE Geosci. Remote. Sens. Lett.* **2015**, *13*, 105–109. [CrossRef]

25. Ronneberger, O.; Fischer, P.; Brox, T. U-net: Convolutional networks for biomedical image segmentation. In Proceedings of the International Conference on Medical Image Computing and Computer-Assisted Intervention, Munich, Germany, 5–9 October 2015; pp. 234–241.
26. Simonyan, K.; Zisserman, A. Very Deep Convolutional Networks for Large-Scale Image Recognition. *arXiv* **2014**, arXiv:1409.1556.
27. He, K.; Zhang, X.; Ren, S.; Sun, J. Deep residual learning for image recognition. In Proceedings of the IEEE Conference on Computer Vision and Pattern Recognition, Las Vegas, NV, USA, 27–30 June 2016; pp. 770–778.
28. Abadi, M.; Barham, P.; Chen, J.; Chen, Z.; Davis, A.; Dean, J.; Devin, M.; Ghemawat, S.; Irving, G.; Isard, M.; et al. Tensorflow: A system for large-scale machine learning. In Proceedings of the 12th USENIX Symposium on Operating Systems Design and Implementation (OSDI 16), Savannah, GA, USA, 2–4 November 2016; pp. 265–283.
29. Wu, Y.; He, K. Group normalization. In Proceedings of the European Conference on Computer Vision (ECCV), Munich, Germany, 8–14 September 2018; pp. 3–19.
30. Ioffe, S.; Szegedy, C. Batch normalization: Accelerating deep network training by reducing internal covariate shift. *arXiv* **2015**, arXiv:1502.03167.
31. Bottou, L. Large-scale machine learning with stochastic gradient descent. In Proceedings of the COMPSTAT'2010, Paris, France, 22–27 August 2010; pp. 177–186.
32. Srivastava, N.; Hinton, G.; Krizhevsky, A.; Sutskever, I.; Salakhutdinov, R. Dropout: A simple way to prevent neural networks from overfitting. *J. Mach. Learn. Res.* **2014**, *15*, 1929–1958.
33. Orteu, J.J.; Garcia, D.; Robert, L.; Bugarin, F. A speckle texture image generator. In *Proceedings of the Speckle06: Speckles, from Grains to Flowers*; International Society for Optics and Photonics: Bellingham, WA, USA, 2006; p. 63410H.
34. Quan, T.M.; Hildebrand, D.G.; Jeong, W.K. Fusionnet: A deep fully residual convolutional neural network for image segmentation in connectomics. *arXiv* **2016**, arXiv:1612.05360.
35. Wang, Y.W.; Lee, C.C.; Lo, C.M. Supraspinatus Segmentation From Shoulder Ultrasound Images Using a Multilayer Self-Shrinking Snake. *IEEE Access* **2018**, *7*, 146724–146731. [[CrossRef](#)]
36. Milletari, F.; Ahmadi, S.A.; Kroll, C.; Plate, A.; Rozanski, V.; Maiostre, J.; Levin, J.; Dietrich, O.; Ertl-Wagner, B.; Bötzel, K.; et al. Hough-CNN: Deep learning for segmentation of deep brain regions in MRI and ultrasound. *Comput. Vis. Image Underst.* **2017**, *164*, 92–102. [[CrossRef](#)]
37. Zhou, B.; Khosla, A.; Lapedriza, A.; Oliva, A.; Torralba, A. Learning deep features for discriminative localization. In Proceedings of the IEEE Conference on Computer Vision and Pattern Recognition, Las Vegas, NV, USA, 27–30 June 2016; pp. 2921–2929.
38. Pedamonti, D. Comparison of non-linear activation functions for deep neural networks on MNIST classification task. *arXiv* **2018**, arXiv:1804.02763.